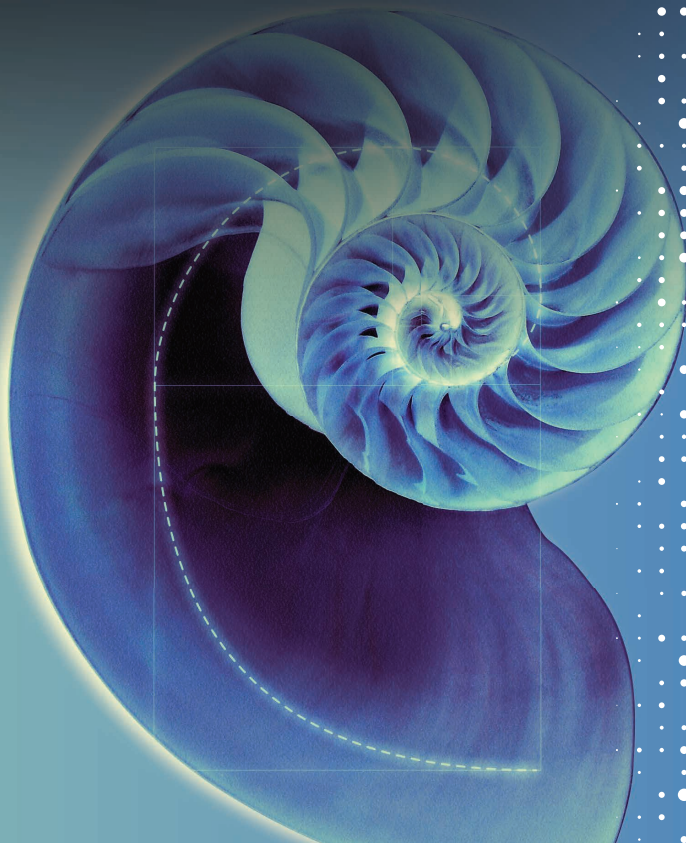


**Precision is
our nature**



EMO

H A N N O V E R

22-26/09/2025

Invitation

Hall 12

Booth C31



MAKINO

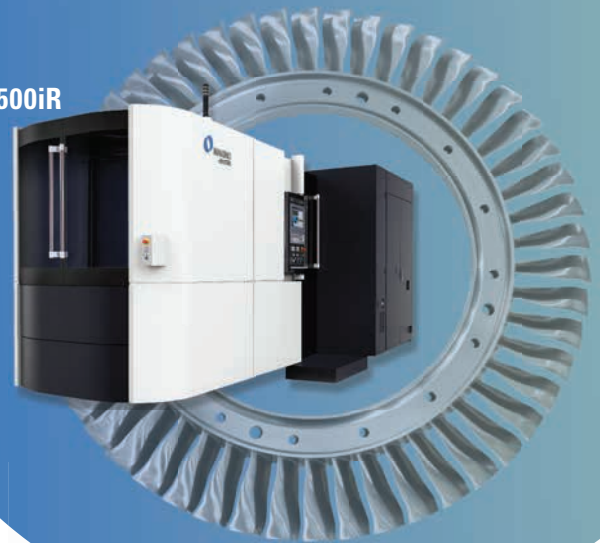
Promise of Performance

Industrial Components



DA500 with
pallet magazine

a500iR



Aerospace

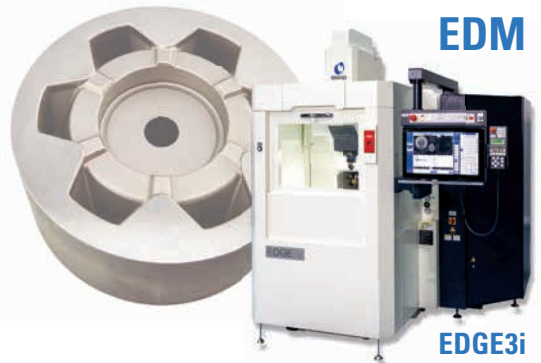
Die & Mould

f6



European premiere

EDM



EDGE3i

Hall 12 Booth C31

Dear business partner,

We are committed to precision, a dedication rooted in our 'Promise of Performance'. This philosophy leads us to develop advanced solutions that boost your production efficiency.

Discover the impact of our latest technologies at **EMO 2025 in Hannover**. Witness for yourself the transformative power of our machining and automation solutions, engineered to reduce your production costs while achieving unparalleled precision.

Engage with our experts during live demonstrations and explore new ways of enhancing your productivity and competitiveness.

We extend a most cordial invitation for you to join us on **22-26 September 2025 (Hall 12, Booth C31)**.

Best regards,



Urko Javier Ugalde

Head of Marketing & Product Planning
Makino Europe GmbH



- Boost your precision and throughput times with our new rotary axis technology
- Automate your most complex 5-axis production in the hardest materials

For more information, to request an
appointment or get free tickets:

makino.eu/en-us/emo-2025



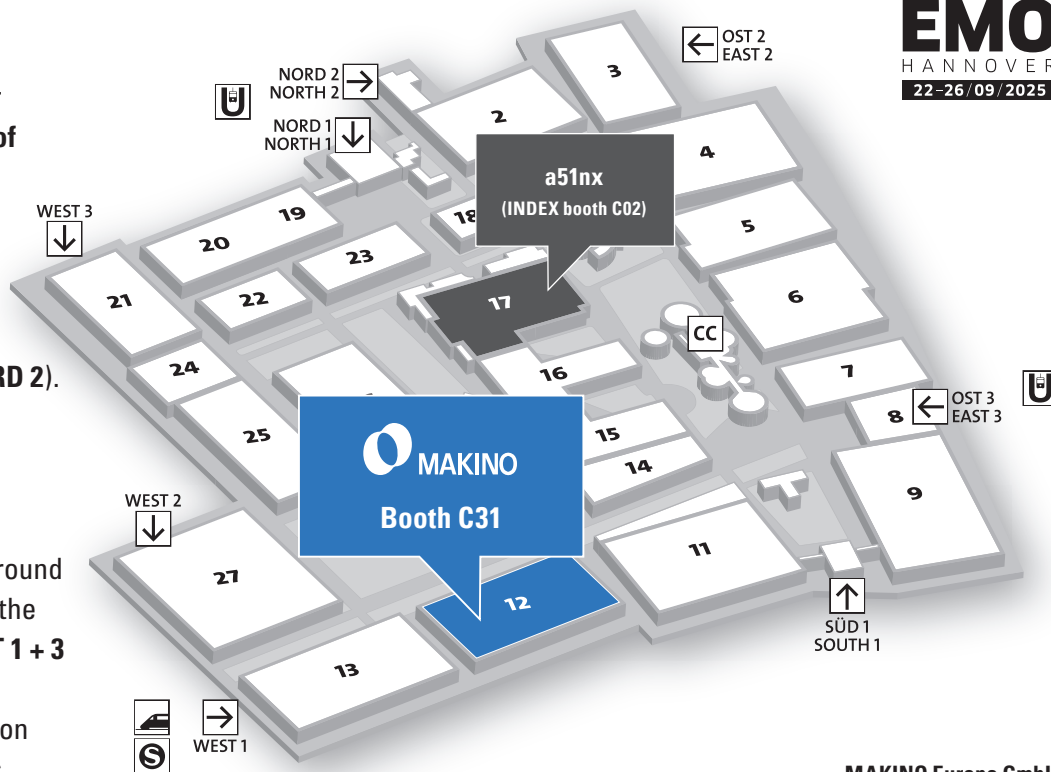
How to find us

By underground

Take the **U-Bahn** Line 8 or Line 18 from **Hauptbahnhof** (Hannover Main Station) to **Messe Nord** and you will reach Hannover Exhibition Centre in about 18 minutes (entrances **NORD 1 + NORD 2**).

By taxi

Taxi stands are located around the exhibition grounds at the entrances **NORD 2**, **WEST 1 + 3** and **SÜD 1**. The journey time between the exhibition grounds and the airport is approx. 30 minutes, depending on the volume of traffic.



MAKINO Europe GmbH

Kruichling 18, 73230 Kirchheim unter Teck, Germany

Tel.: +49 (7021) 503-0 | www.makino.eu